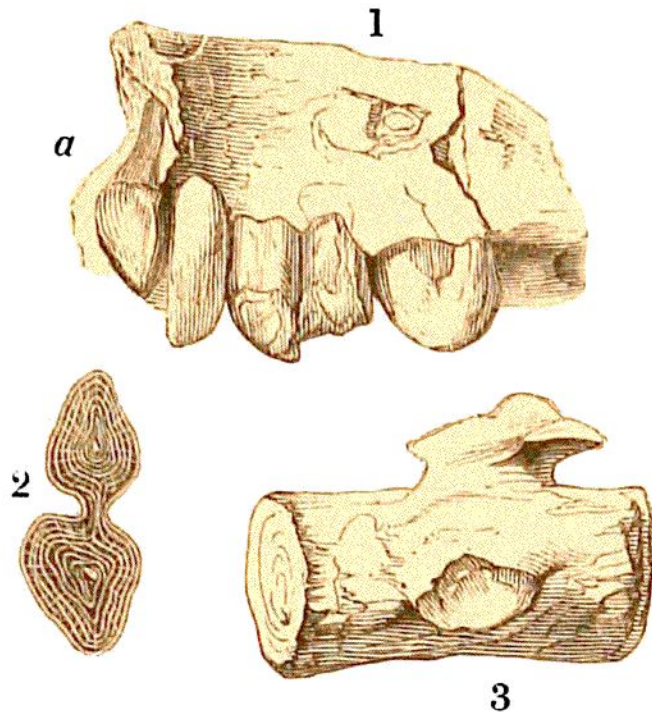


The bones of an herbivorous Cetacean, the *Manatus*, a genus now peculiar to the torrid zone, have been found in the eocene strata in various parts of France, associated with those of the Palæotheria, and other extinct mammalia of the Paris basin.



LIGN. 152. PORTION OF THE JAW, WITH TEETH, AND A VERTEBRA, OF ZEUGLONDON CETOIDES. *Tert.* Alabama.

Fig. 1.—Portion of the upper jaw, with three teeth:  $\frac{1}{8}$  nat.

a. Denotes the exposed fang of a tooth.

2.—Transverse section of the crown of a tooth:  $\frac{1}{4}$  nat.; showing the deep constriction in the middle.

3.—A caudal vertebra:  $\frac{1}{12}$  nat.

ZEUGLONDON CETOIDES. *Lign.* 152. (*Geol. Trans.* Vol. VI. pl. 7, 8.).—The remains of an extraordinary fossil Cetacean, of an extinct genus, were first made known by Dr. Harlan, of Philadelphia,\* who

\* Beautiful figures of the teeth, vertebræ, &c., of the natural size, are given by Dr. Harlan, in his interesting