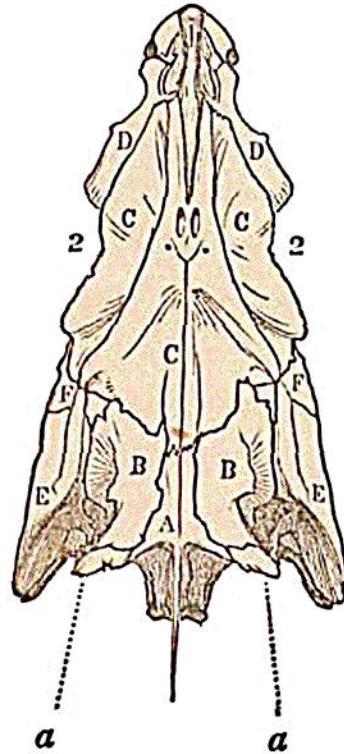


three. The super-occipital bone, A, (fig. 10,) pieces on to the superior frontal, C, C, C; and the parietals, B, B, which in

Fig. 10



UPPER SURFACE OF CRANIUM OF COD.*

- | | |
|----------------------------|----------------------------|
| A, Occipital bone. | F, F, Posterior frontals. |
| B, B, Parietals. | E, E, Mastoid bones. |
| C, C, C, Superior frontal. | 2, 2, Eye orbits. |
| I, Nasal bone. | a, a, Par-occipital bones. |
| D, D, Anterior frontal. | |

* Professor Owen, in fixing the homologies of the ichthyic head, differs considerably from Cuvier; but his view seems to be demonstrably the correct one. It will, however, be seen, that in my attempted comparison of the divisions of the ancient ganoid cranium with those of the craniums of existing fishes, the points at issue between the two great naturalists are not involved, otherwise than as mere questions of words. The matter to be deter-