

tained to be the root of another kind of fossil which is abundant in the coal, and in the rock immediately above it, called Sigillaria.

*Sigillaria*.—These are large flattened trunks, from thirty to sixty, and even seventy feet long. They are covered by scars or

Fig. 232.

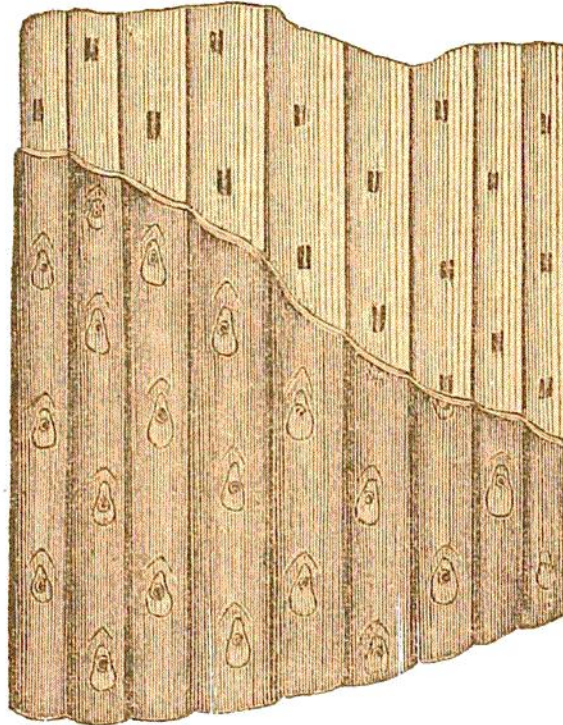
*Sigillaria.*

Fig. 233

*Sigillaria elegans*

Fig. 234.

*Sigillaria Grosseri.*