

Let us review each of these four Ages of Nature, with reference to the diagram at the beginning of the volume.

470. THE PALÆOZOIC AGE. *Reign of Fishes.* — The palæozoic fauna, being the most remote from the present epoch, presents the least resemblance to the animals now existing, as will easily be perceived by a glance at the fol-

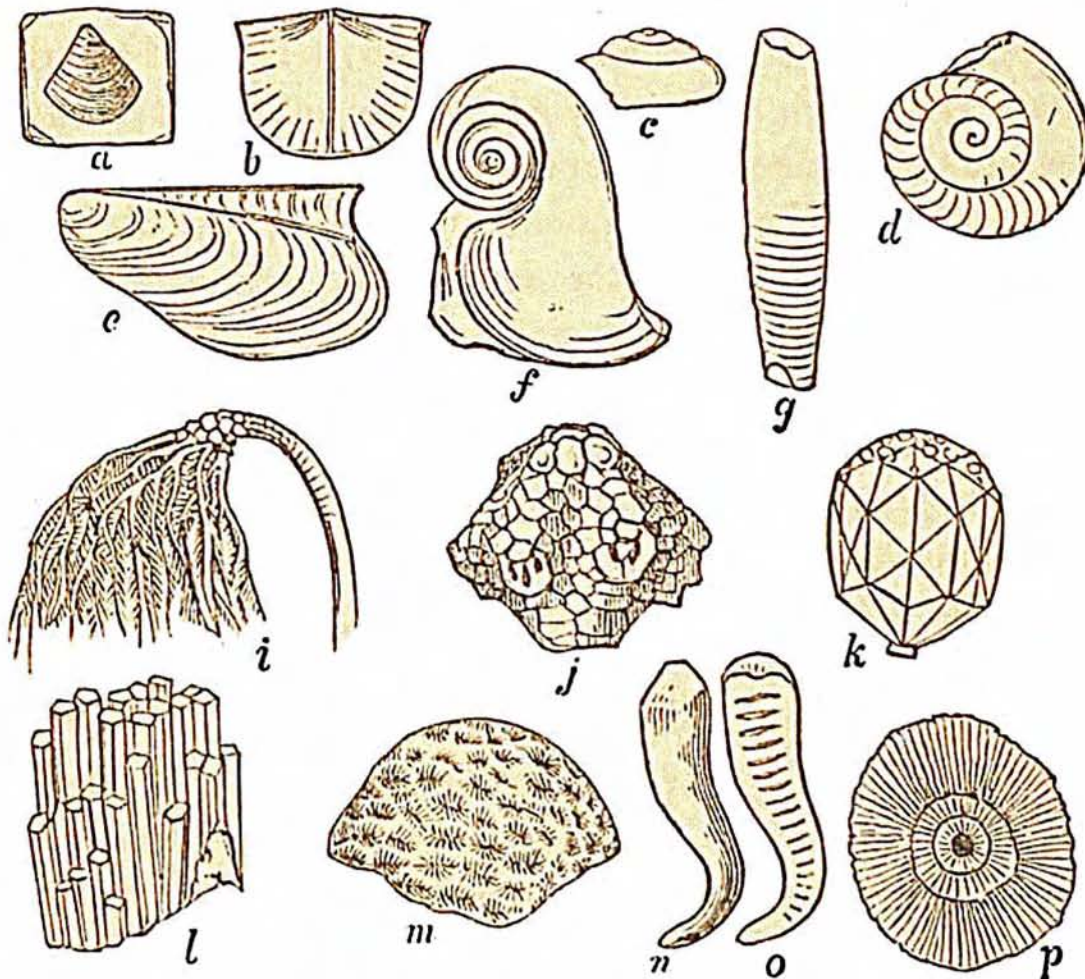


Fig. 155.

lowing sketches, (Fig. 155.) In no other case do we meet with animals of such extraordinary shapes, as in the strata of the Palæozoic age.

471. We have already stated (466) that there are found, in each formation of the primary age, animal remains of all the four great departments, namely, vertebrates, articulata, mollusks, and radiata. We have now to examine to what peculiar classes and families of each department these remains belong, with a view to ascertain if any relation between