

(Fig. 162,) an extinct type of animals, protected by a sheath, and terminating in a conical body, somewhat similar to the bone of the *Sepia*, which commonly is the only part preserved, (b.)

487. The variety is not less remarkable among the Radiates.

There are to be found representatives of all the classes, even traces of Jelly-fishes have been made out in the slate of Solenhofen, in Bavaria. The Polyps were very abundant at that epoch, especially in the upper stages, one of which has received the name of Coral-rag. Indeed, there are found whole reefs of corals in their natural position, similar to those which are seen in the islands of the

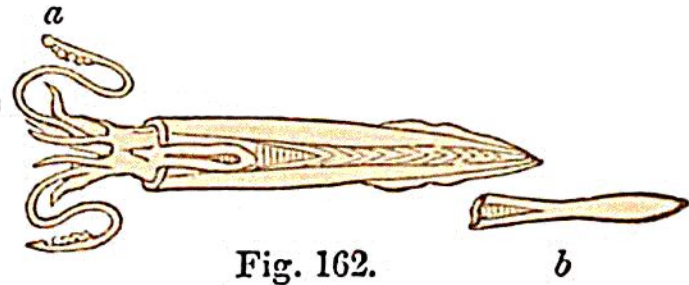


Fig. 162.

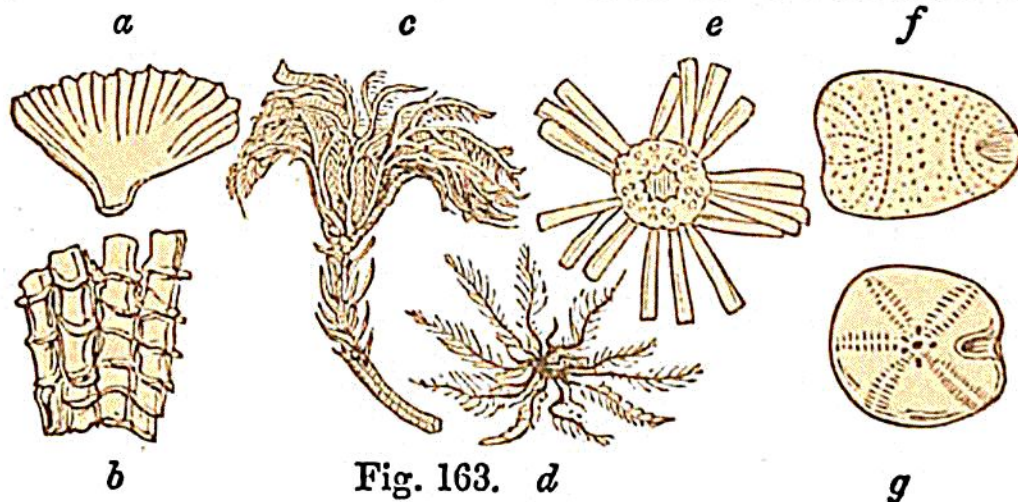


Fig. 163.

Pacific. Among the most remarkable types of stony Polyps may be named the fan-like *Lobophyllia*, (*L. flabellum*, a,) and various forms of tree-corals, *Lithodendron pseudostylina*, b.) But the greatest variety exists among the Echinoderms. The Crinoids are not quite so numerous as in former ages. Among the most abundant are the *Pentacrinus*, (c.) There are also Comatula-like animals, that is to say, free Crinoids (*Pterocoma pinnata*, d.) Many Starfishes are likewise observed in the various stages of this formation. Finally, there is an extraordinary variety of