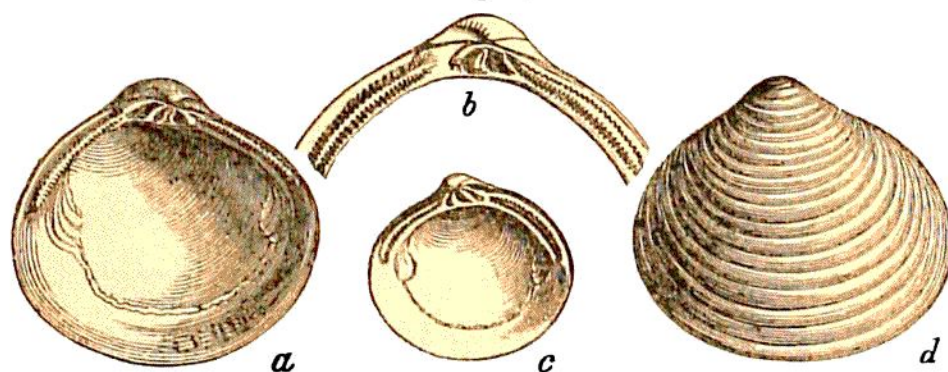


water species above enumerated:—*Buccinum undatum*, *Littorina littorea*, *Nassa reticulata*, *Purpura lapillus*, *Tellina solidula*, *Cardium edule*, and fragments of some others. Several of these I have myself collected entire, though in a state of great decomposition, lying in the white sand called 'sable aigre' by the workmen. They are all littoral species now proper to the contiguous coast of France. Their occurrence in a fossil state associated with freshwater shells at Menchecourt, had been noticed as long ago as 1836 by

Fig. 17



*Cyrena fluminalis*, O. F. Müller, sp.\*

*a* Interior of left valve, from Gray's Thurrock, Essex.

*b* Hinge of same magnified.

*c* Interior of right valve of a small specimen, from Shacklewell, London.

*d* Outer surface of right valve, from Erith, Kent.

<i>Living.</i>		<i>Dates of Specific Names.</i>	
<i>Tellina fluminalis</i> , O. F. Müller . . . . .			1774
<i>Venus fluminalis</i> Euphratis, Chemnitz . . . . .			1782
<i>Cyclas</i> Euphratica, Lam. . . . .			1806
<i>Cyrena</i> cor, Lam. (Nile) . . . . .			1818
„ consobrina, Caillaud (Nile) . . . . .			1823
„ Cashmiriensis, Desh. . . . .			
<i>Corbicula fluminalis</i> , Mühlfeldt . . . . .			1811
<i>Fossil.</i>			
<i>Cyrena</i> trigonula, S. Woodward . . . . .			1834
„ Gemmellarii, Philippi . . . . .			1836
„ Duchastelii, Nyst . . . . .			1838

MM. Ravin and Baillon, before M. Boucher de Perthes commenced the researches which have since made the locality

\* For synonyms, see S. Woodward, Tibet Shells, Proc. Zool. Soc., July 8, 1856.