

Composed of table-lands, whose average elevation is 2000 feet, and of mountains which attain an altitude of 6600 feet, it might justly

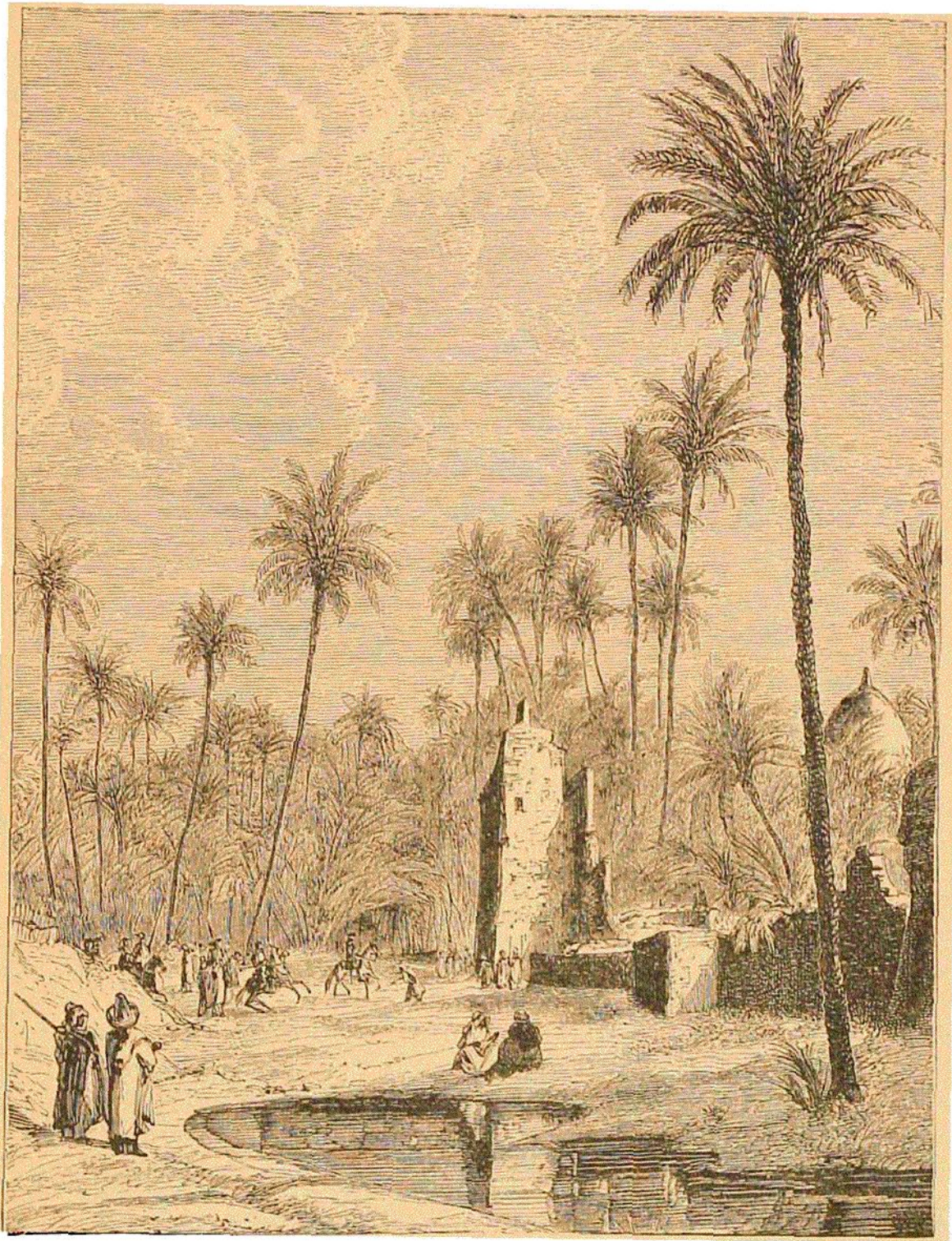


FIG. 92.—AN OASIS OF THE SAHARA.

be called the "Switzerland of the Desert." The air there is very pure, healthy, and comparatively fresh. Barley is cultivated, and especially millet and *dourra*. The animals which frequent it are the maneless