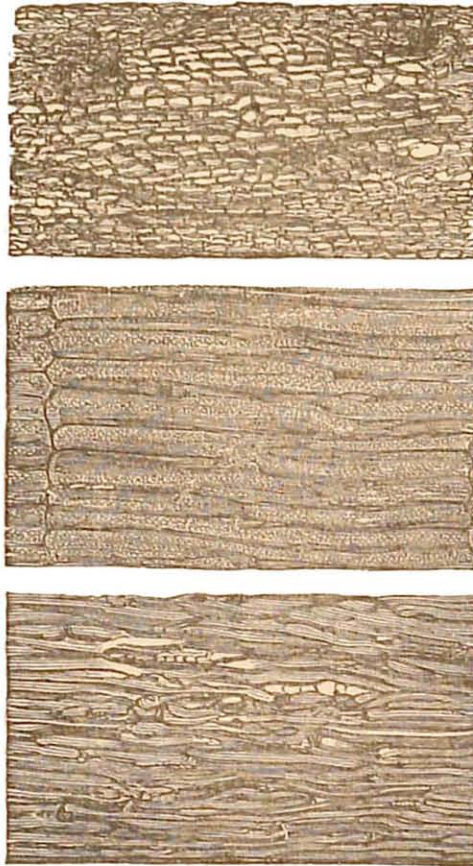


trace of a larger ; and one of its best preserved vegetable organisms is a lepidodendron,—an extinct ally of the Lycopodiums ; while in the upper beds of the system, especially as developed in the south of Ireland, the noble fern known as *Cyclopteris Hibernicus* is very abundant. This fern has been detected also in the Upper Old Red of our own country, mingled with fragments of contemporary Calamites. With, however, these earliest plants of the land yet known there occurs a true wood, which belonged, as shown by its structure, to a gymnospermous or polycotyledonous tree, and which we find associated with remains of *Cocosteus* and *Diplacanthus*.

Fig. 3.



CONIFER OF THE LOWER OLD RED SANDSTONE.

*Cromarty.*

(Mag. forty diameters.)

And here let me remark, that the facts of palæontological science compel us to blend, in some degree, with the classifi-