

these new tribes? A convulsion of nature shuts them off from a lineal connection with the generations of the Potsdam period—a convulsion which moulded the basin of Lake Superior (Fig. 30) and notched its southern shore with Kewenaw Point. We descry, moreover, among these new populations forms which could not possibly sustain any genetic relation to their predecessors in the line of being. These all are new creations. There is no avoiding the conclusion. The omnific fiat of the Creator has again gone forth, and swarms of beings innumerable start from the teeming and prolific deep. *Encrinites* now first adorn the flowery chambers of the sea—one of the new ideas

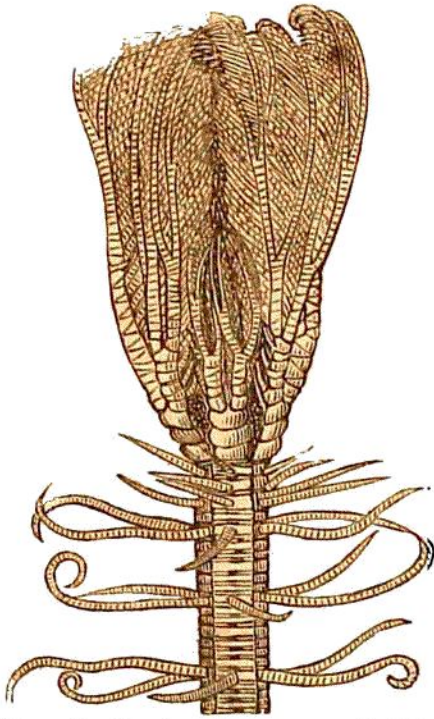


Fig. 40. *Pentacrinus caput-Medusæ*. A crinoid living in the Caribbean Sea.

just realized from the Creative Mind—flower-like, with slender stem affixed to the submarine soil, a delicate corolla uplifted on its extremity, and petals delicately fringed expanded to the diluted sunlight of the smiling heavens above, struggling down to the coral meadows on which they flourished. And these were *animals*. With all their plant-like form, and grace, and delicacy, and attachment to the soil, these new and wonderful creations had sensibility and will, and enjoyed their allotment at that early age of the

world, and at that depth beneath the cheerful sunlight, and the caressing breeze, and the vital air, as the butterfly now, which is borne upon the sunbeam from flower to flower, and sips the sweetest nectar from the fairest creations of the vegetable world. All over the area of the Northern and Western States, and as far south as Alabama and Mis-