

and thickness; others form fragments of the same, more or less dislocated; others, again, present themselves in isolated knolls, far removed from similar formations. In short, basaltic rocks present themselves in veins or dykes, more or less, in most countries, of which Central France and the banks of the Rhine offer many striking examples. These veins present very evident proofs that the matter has been introduced from below, and in a manner which could only

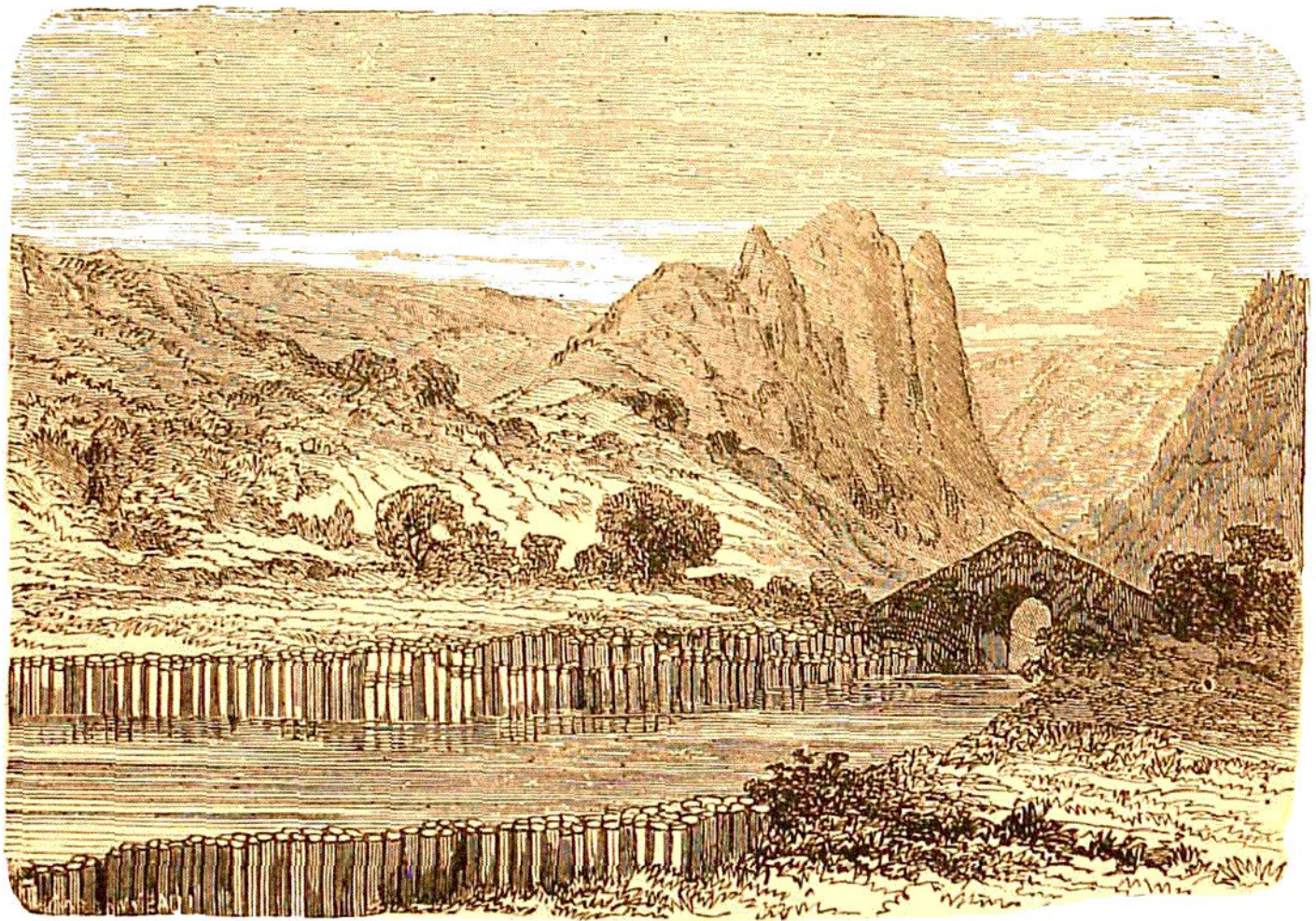


Fig. 7.—Basaltic Causeway, on the banks of the river Volant, in the Ardèche.

result from injection from the interior to the exterior of the earth. Such are the proofs presented by the basaltic veins of Villeneuve-de-Berg, which terminate in slender filaments, sometimes bifurcated, which gradually lose themselves in the rock which they traverse. In several parts of the north of Ireland, chalk-formations with flints are traversed by basaltic dykes, the chalk being converted into granular marble near the basalt, the change sometimes extending eight or ten feet from the wall of the dyke, and being greatest near the surface of