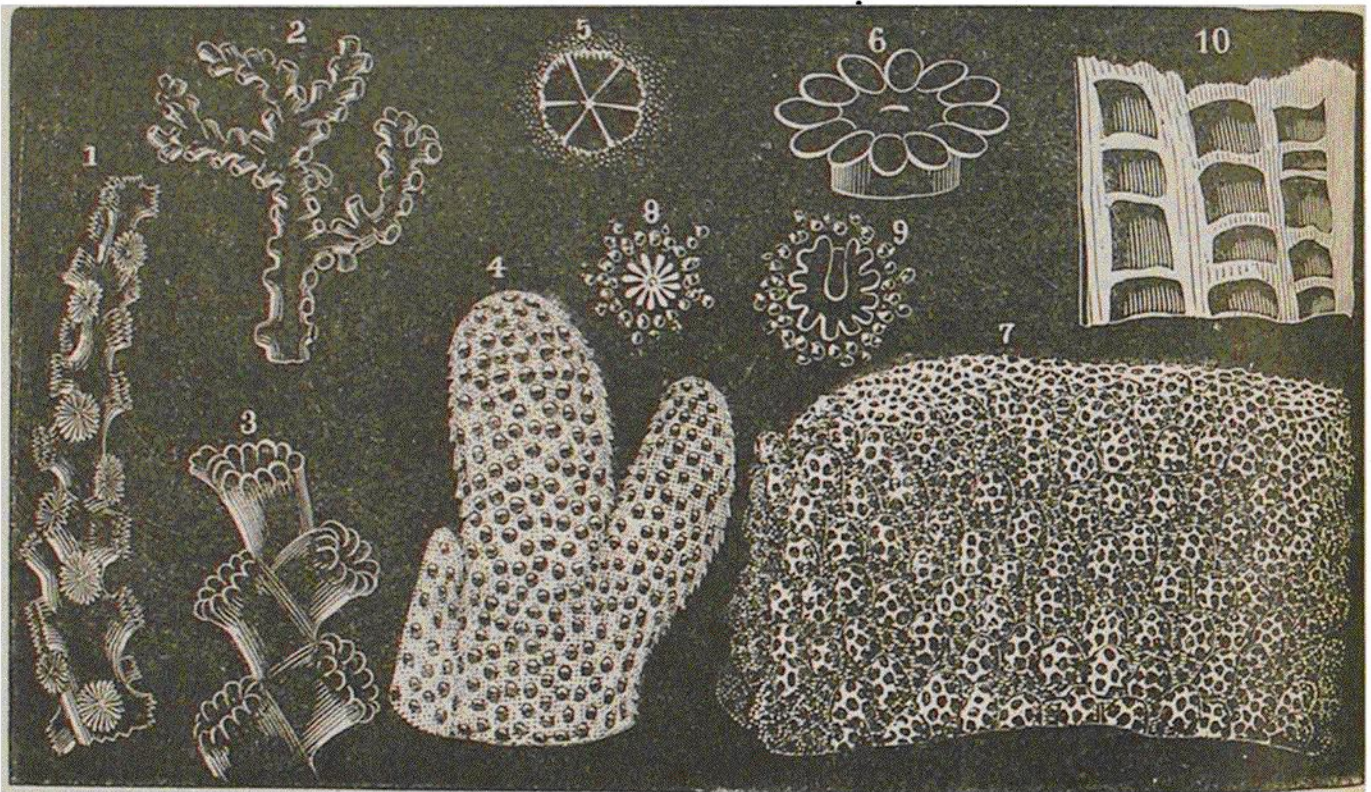


Professor Verrill, to the Astrangiæ, and belongs to that family. Its cylindrical stems are gathered into crowded clumps. The *C. arbuscula* is figured on page 34.

A West India species of another genus of the group, the *Phyllangia Americana*, is represented in the preceding figure.

In the following cut, figure 1 represents the extremity of a branch of an *Oculina*, the *O. varicosa*, of the family *Oculinidæ*. The species of this genus grow in clumps of round branches, and have very solid corolla, so white and firm when bleached



CORALS OF THE OCULINA TRIBE.

as to go by the popular name of "white coral," and to be sometimes polished for beads and other such ornamental purposes.

Figure 2 is a branch of a beautiful little coral called *Stylaster erubescens* Pourt., and 3, a portion of the same enlarged. It has the firmness, and something of the habit of an *Oculina*, but is rather like a miniature *Oculina*, its calicles never exceeding a twentieth of an inch in breadth. There are a number of genera in this *Stylaster* family, the *Stylasteridæ*, and the corals are among the most delicate of species.