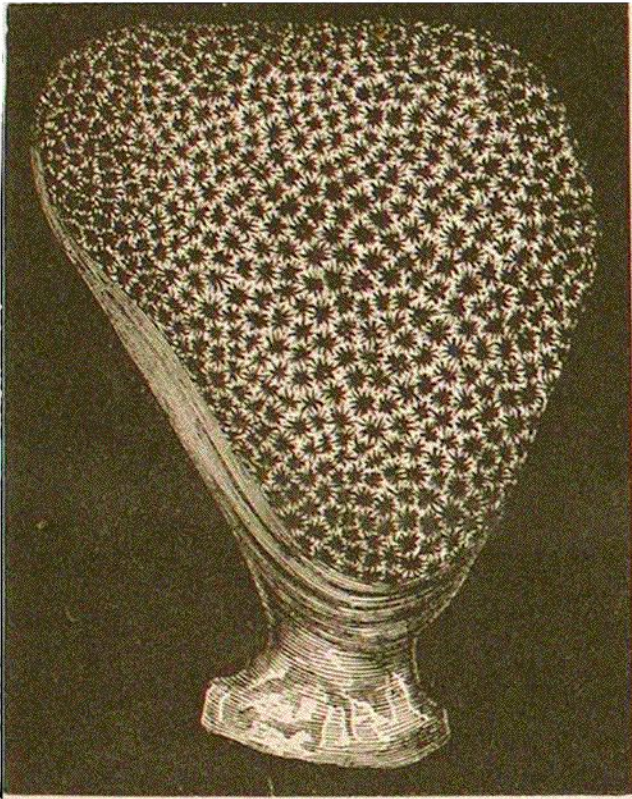


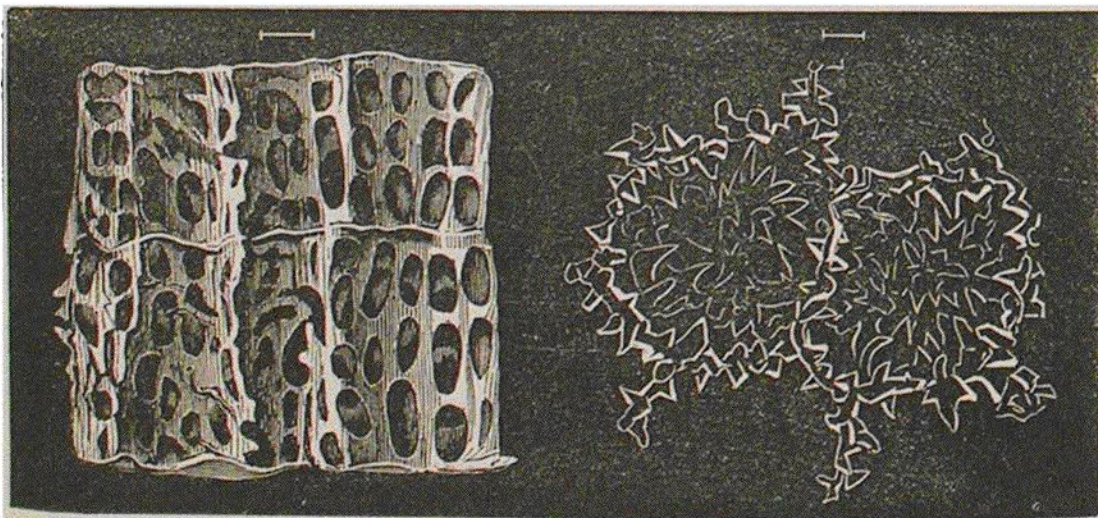
One of the genera in this family is *Alveopora*. It contains the lightest of known corals, the texture being exceedingly porous, and the walls of the cells, which are continued regularly through the corallum,



ALVEOPORA VERRILLIANA, D.

are like delicate lace-work. As stated long since by the author, "they are intermediate in character between the *Montiporæ* and the *Favosites* group"—as shown by the texture and the horizontal partitions across the cells, giving them the "tabulate" character of the ancient *Favosites*, as represented by the au-

thor in the annexed figure exhibiting a section of the corallum of a Feejee species. On account of this tabulate structure,



VERTICAL SECTION OF CORALLUM, AND UPPER VIEW OF CALICLES, ENLARGED, OF ALVEOPORA SPONGIOSA, D.

the genus was referred by the author to the *Favosites* family. A related species, of unknown locality, has been made the