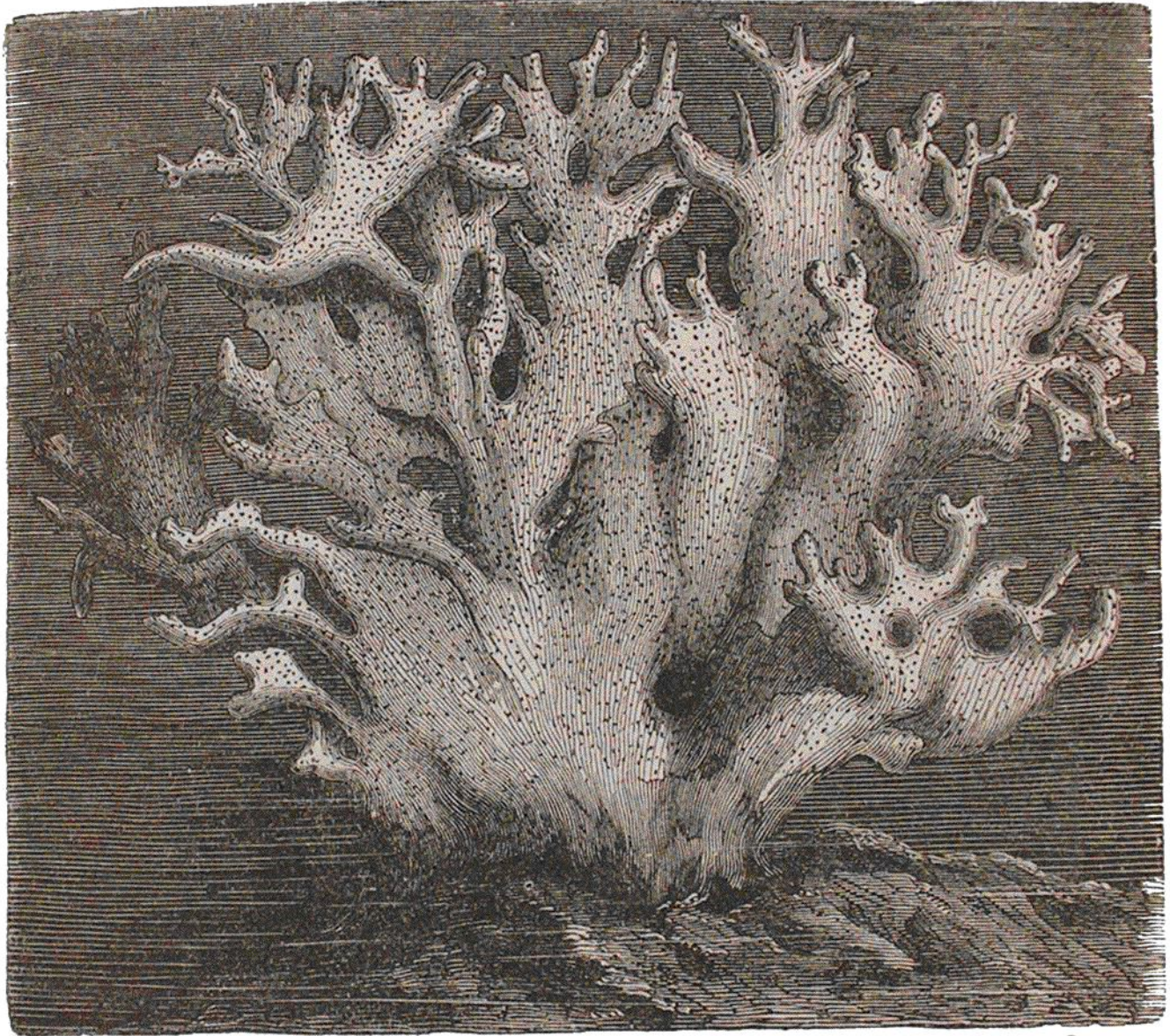


Pacific, and waited long for the expansion of the animals, but was never gratified by their making their appearance. Agassiz observes that they are very slow in expanding themselves. When expanded, they have no resemblance to true polyps. There is simply a fleshy tube with a mouth at top and a few small rounded prominences in place of tentacles, four of



MILLEPORA ALCORNIS.

them sometimes largest. The next figure, from Agassiz, shows, much enlarged, a portion of a branch of the *Millepora alcornis* with the animals expanded, and the small figure *a*, near the top of the cut, gives the natural size of the same.

The corals of the Milleporæ are solid and stony, as much so as any in coral seas. They have generally a smooth