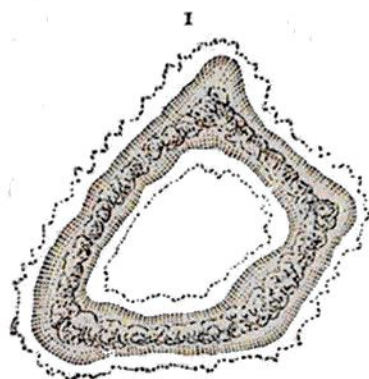
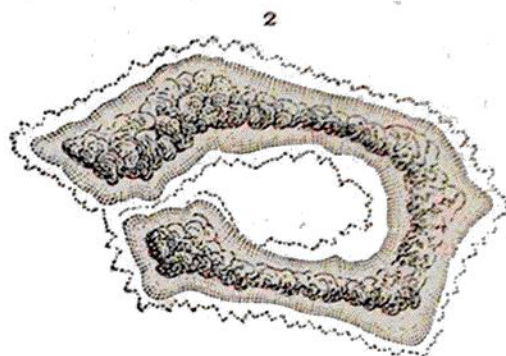


were so tame that we took them from the trees as if they had been their flowers.



TAIARA.

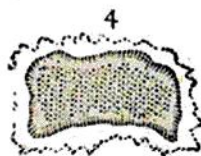


HENUAKE, OR HONDEN.

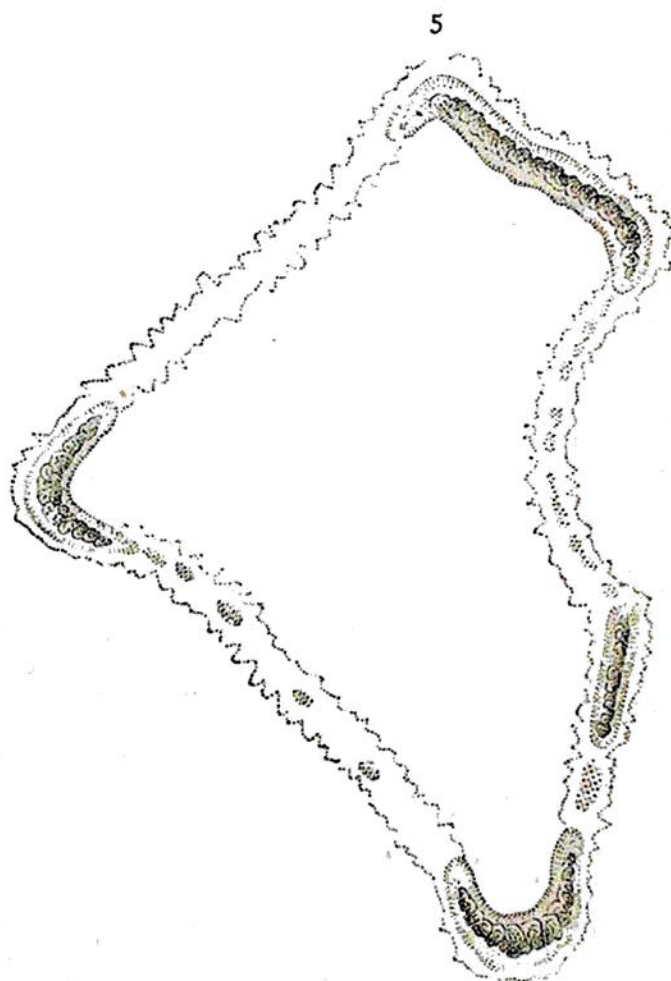
Jarvis's and Swain's Islands (Figs. 3 and 4) are of still smaller size, and have no lagoon. The surface of the former



JARVIS'S ISLAND.



SWAIN'S ISLAND.



FAKAAFO, OR BOWDITCH'S ISLAND.

is sandy, while the latter is densely covered with foliage. Both islands are a little depressed about the centre, a fact indicating that there was formerly a lagoon.