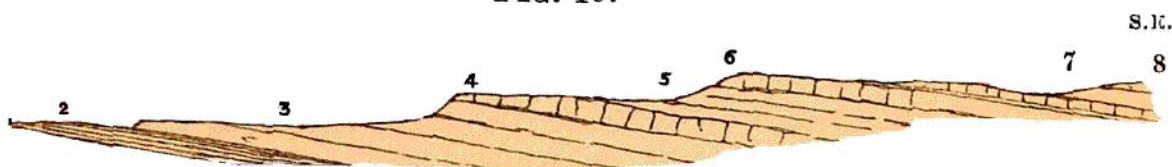


CHAPTER VII.

UPPER SILURIAN SERIES.

THE stratigraphical order of the UPPER SILURIAN SERIES is shown in the table p. 30. They were deposited under the following circumstances:—The Lower Silurian rocks in large areas in the British Islands and in some other areas, were upheaved, more or less contorted, and in many places suffered a great amount of denudation before the deposition of the Upper Silurian strata began, which, therefore, in various districts lie quite *unconformably* upon them. In the

FIG. 19.



1. *Caradoc sandstone (Lower Silurian).*
2. Upper Llandovery beds.
3. Wenlock shale.
4. Wenlock limestone.
5. Upper Ludlow.
6. Aymestry limestone.
7. Upper Ludlow.
8. *Old Red Sandstone.*

typical district of Wenlock and Ludlow the arrangement of the various subdivisions of these Upper Silurian strata is as shown in figs. 19 and 22, the bands of limestone generally forming bold terraces, that look north-