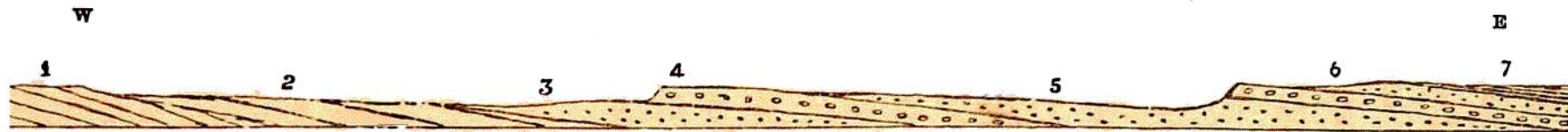


FIG. 32.

Typical section across the New Red series, Shropshire, showing their relation to the Permian and Coal-measure formations.



- | | | |
|--|---|----------------|
| 7. New Red Marl | } | Keuper. |
| 6. White and red sandstones and conglomerate | | |
| 5. Red Sandstone | } | Bunter. |
| 4. Conglomerate | | |
| 3. Red Sandstone | | |
| 2. Red Sandstones and Marls | | Permian. |
| 1. | | Coal-measures. |