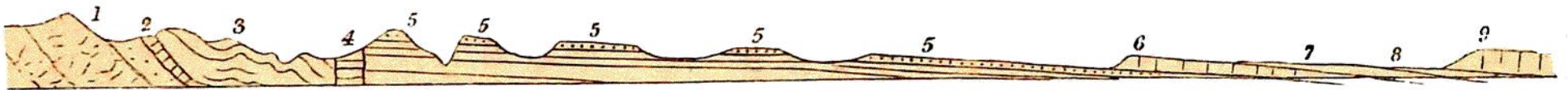


FIG. 68.

*Section from Cumberland towards Bridlington.*



1. Igneous rocks or Green Slates and Porphyrys (lavas and volcanic ashes) of Lower Silurian age. 2. Coniston Limestone. 3. Upper Silurian grit, &c. 4. Carboniferous Limestone, between faults. 5. Yoredale rocks and Millstone grit. 6. Magnesian Limestone. 7. New Red strata. 8. Lias. 9. Chalk.