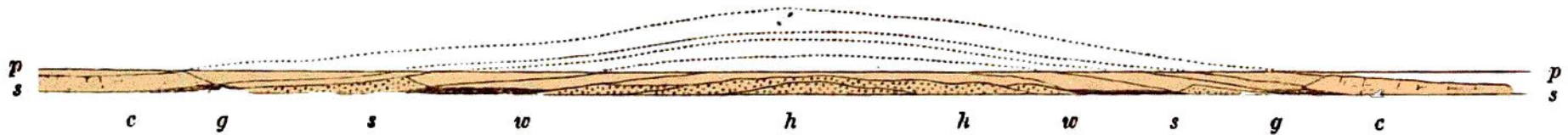


FIG 73.

*Diagrammatic section across the Weald, with the anticlinal curve restored as high as the Chalk.
Map, line 11.*



s s The level of the present sea.

p p The level of the old *plain of marine denudation*, after the dotted parts had been *planed* or denuded off.

c c Chalk and Upper Greensand, *g g* Gault, *s s* Lower Greensand, *w w* Weald Clay, *h h* Hastings sand.
Part at least of the Eocene beds probably lay above the curved strata of Chalk marked in the dotted line.

the Weald.