

fruits, in the Denbighshire grits, at the base of the Silurian.*

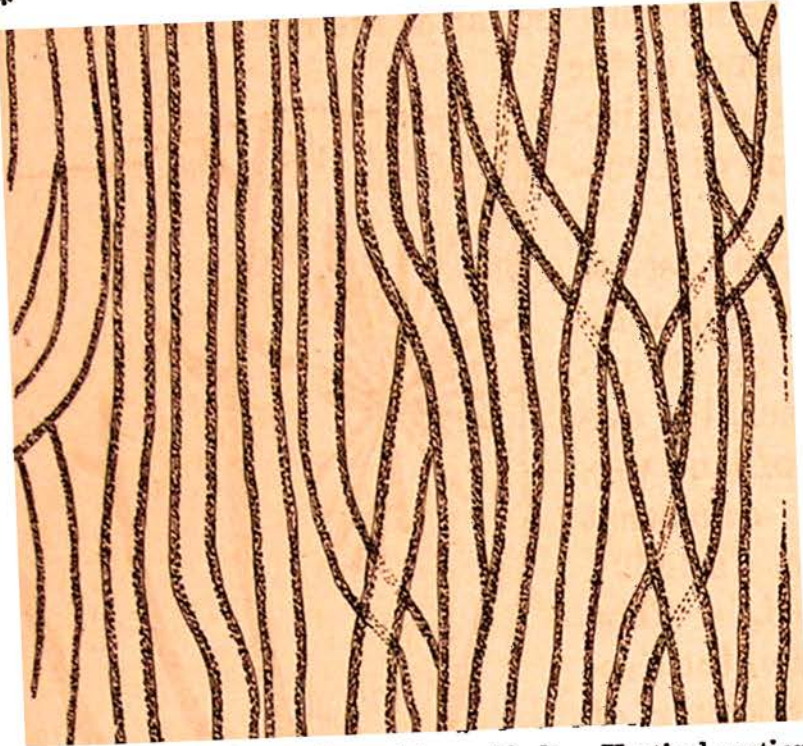


FIG. 2.—*Nematophyton Loganii* (magnified). Vertical section.

From comparison of this singular wood, the structure of which is represented in Figs. 2, 3, 4, with the *débris*

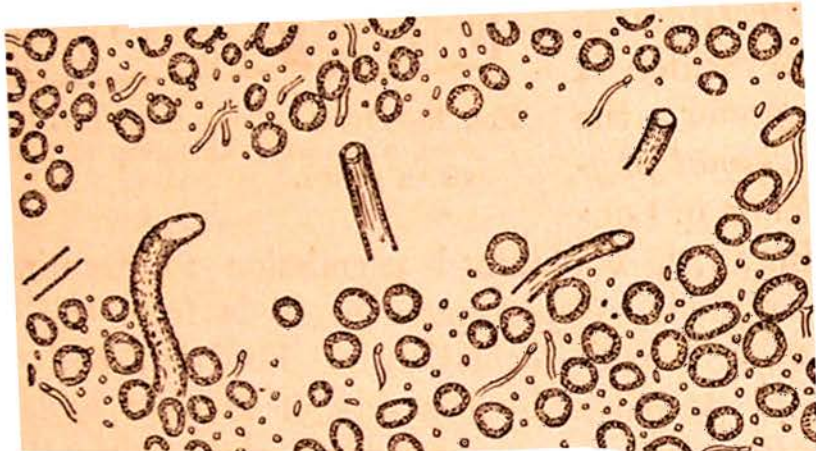


FIG. 3.—*Nematophyton Loganii* (magnified). Horizontal section, showing part of one of the radial spaces, with tubes passing into it.

of fossil taxine woods, mineralised after long maceration in water, I was inclined to regard *Prototaxites*, or, as I

* "Journal of the Geological Society," August, 1881.