

the thin bark and firm wood with which we are familiar in our modern trees, it has a hard external rind, then a great thickness of cellular matter with rope-like bands of fibres, constituting an inner bark, while in the centre is a firm, woody axis of comparatively small diameter, and

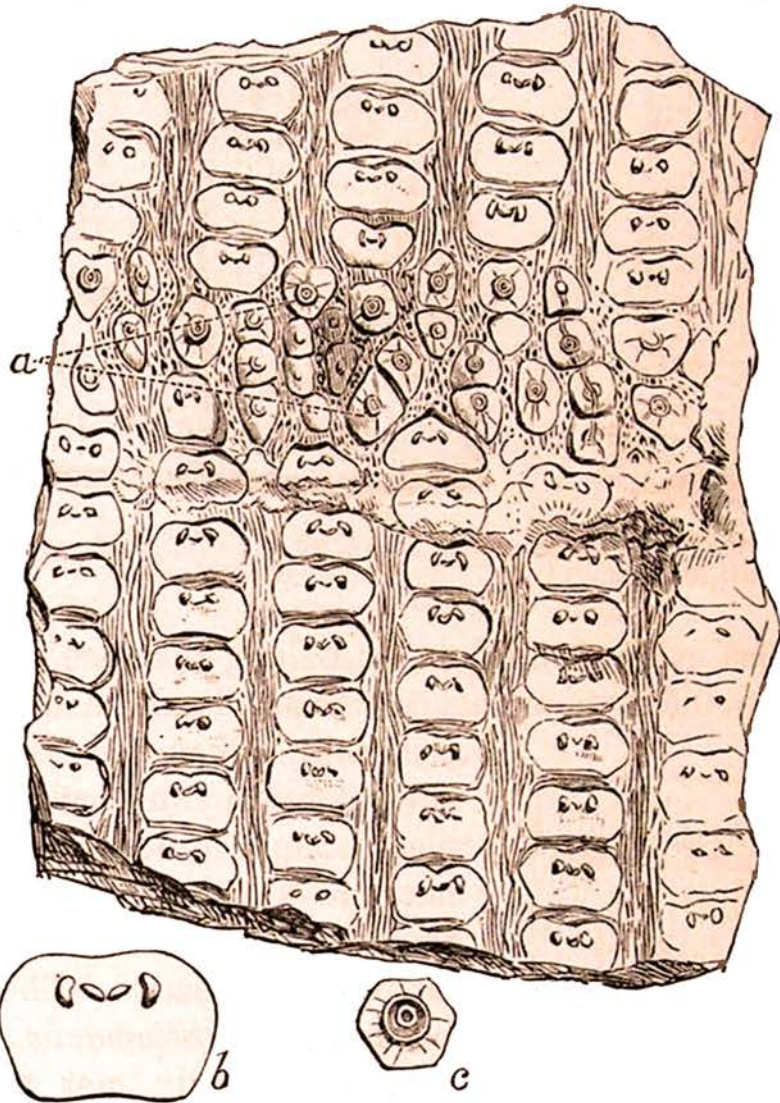


FIG. 34.—*Sigillaria Lorwayana*, Dawson. *a*, Zones of fruit-scars. *b*, Leaf-scar enlarged. *c*, Fruit-scar enlarged. See appended note.

somewhat intermediate in its structures between that of the *Lepidodendra* and those of the cycads and the taxine conifers. Thus a great stem, five feet in diameter, may consist principally of cellular and bast fibres with very little true woody matter. The roots of this tree are