

though the canals themselves in the arrangement more nearly resemble *Calcarina*, which is represented in Fig. 12. In its superposition of many layers, and in its tendency to a heaped up or acervuline irregular growth it resembles *Polytrema* and *Tinoporus*, forms of a different group in so far as shell-structure is concerned. It may thus be regarded as a composite type, combining peculiarities now observed in two groups, or it may be regarded as representing one of these in another series. At the time when Dr. Carpenter stated these

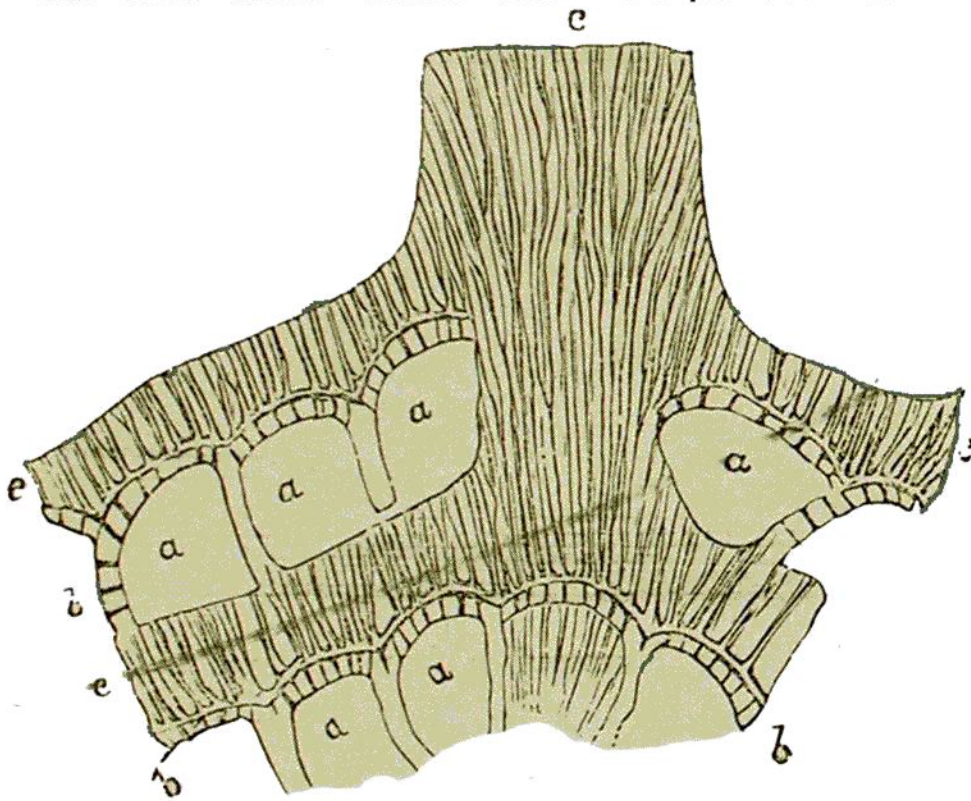


FIG. 12.—Portion of shell of *Calcarina*. Magnified, after Carpenter. (a) Cells. (b) Original cell wall with tubuli. (c) Supplementary skeleton with canals.

affinities, it might be objected that Foraminifera of these families are in the main found in the modern and Tertiary periods. Dr. Carpenter has since shown that the curious oval Foraminifer called *Fusulina*, found in the coal formation, is allied to both Nummulites and Rotalines; and Mr. Brady has discovered a true Nummulite in the Lower Carboniferous of Belgium. I have myself found small Foraminifera in the Silurian and Cambro-Silurian of Canada. This group being