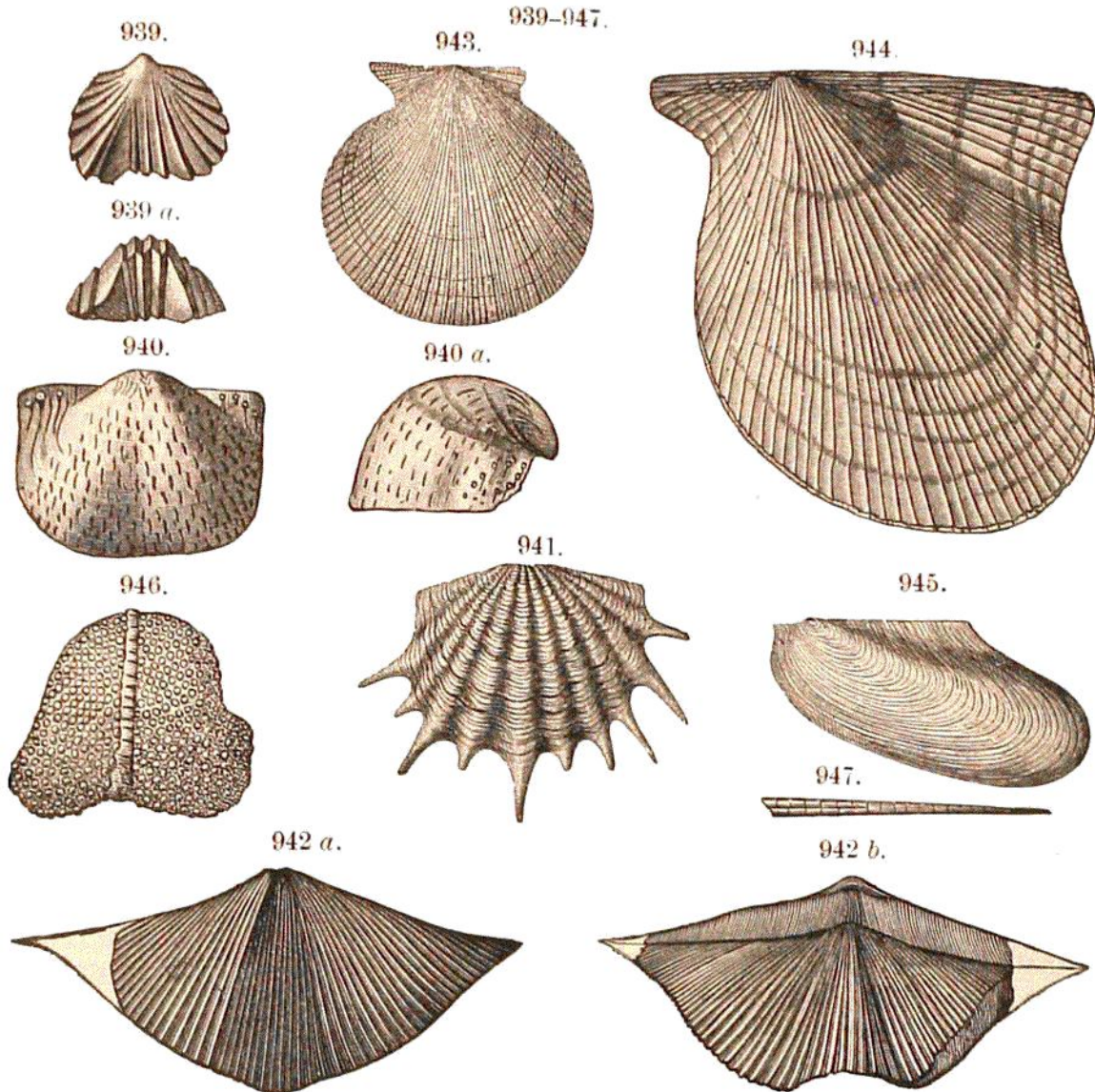
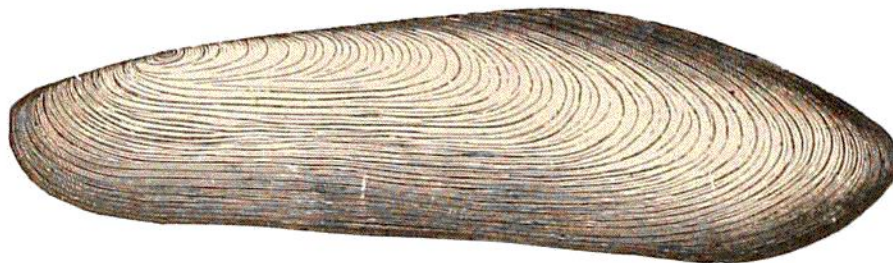


of species. The genera having the most of the species are *Loxonema*, *Cyclonema*, and *Bellerophon*. *Conulariæ* are not uncommon.



BRACHIOPODS, Chemung. — Figs. 939, 939 *a*, *Rhynchonella contracta*; 940, 940 *a*, *Productella lacrymosa*; 941, *Atrypa hystrix*; 942 *a*, *b*, *Spirifer disjunctus*. LAMELLIBRANCHS. — Fig. 943, *Aviculopecten duplicatus*; 944, *Pterinea Chemungensis*; 945, *Leptodesma lichas*. GASTROPOD. — Fig. 946, *Bellerophon mara*; 947, *Bactrites acicula*. From Hall.

018.



LAMELLIBRANCH, Catskill. — *Amnigena Catskillensis*. Vanuxem.

Cephalopods are few, except under the genera *Goniatites* and *Orthoceras*. The thin *Styliolina* limestone bed in the Genesee shale contains several