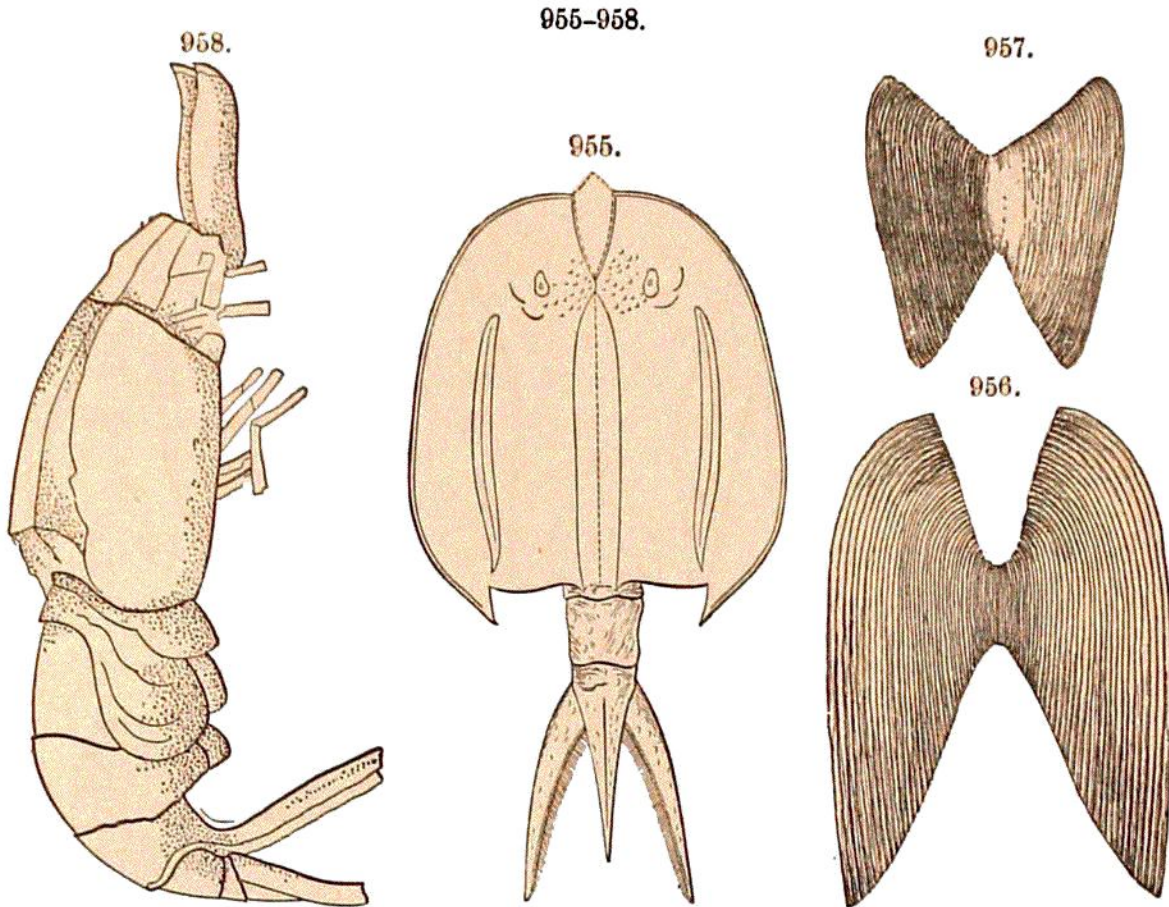


and besides these, there are the first of true Shrimps, or Macrural Decapod



PORTAGE. — Fig. 955, *Mesothyra Oceani*; 956, *Dipterocaris penna* Dædal; 957, *D. Procne*; 958, *Palæopalæmon Newberryi*. Fig. 955, Hall; 956, 957, J. M. Clarke; 958, Whitfield.

Crustaceans, *Palæopalæmon Newberryi* of Whitfield (Fig. 958). Under the Phyllopod genus *Echinocaris* of the same author there are a number of species; and the related *Mesothyra Oceani* of Hall (Fig. 955) had a length and breadth of more than 10 and 5 inches. Figs. 956 and 957 represent carapaces of two other Phyllopods. The specimen of *Palæopalæmon* was found in Ohio, in the lower part of the Ohio shale.

6. **Limuloids.** — The lower beds of the Portage and Upper Chemung have afforded species of *Eurypterus*. Also a few abdominal segments of great size, which have been made the basis of the species *Stylonurus Wrightianus*, supposed to have been two feet long.

Of Catskill Eurypterids, one gigantic species, *Stylonurus excelsior* H., has been described from imperfect specimens found in the Catskill beds of Delaware County, N. Y., and Wyoming County, Pa. The cara-



CHEMUNG. — Fig. 959, *Protollimulus Ertensis*, ventral side. H. S. Williams.