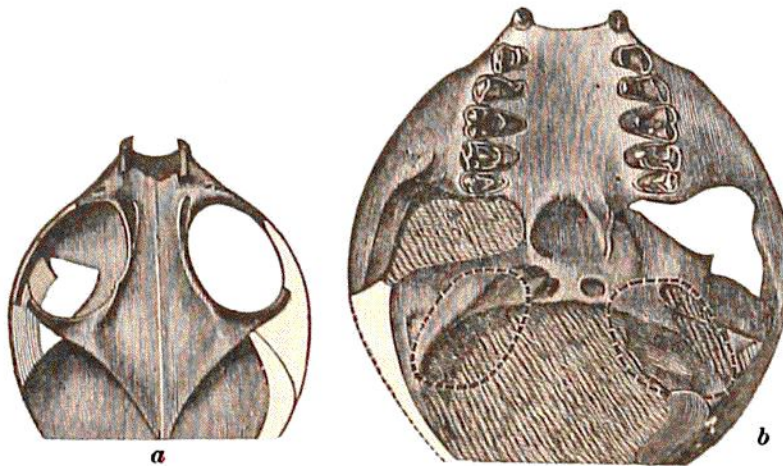


From the Puerco and Wasatch beds come the earliest of the Quadrumana. Fig. 1529 represents the skull of one of the species, *Anaptomorphus homunculus* Cope, from the Wasatch beds of the Big Horn Basin, of Wyoming.

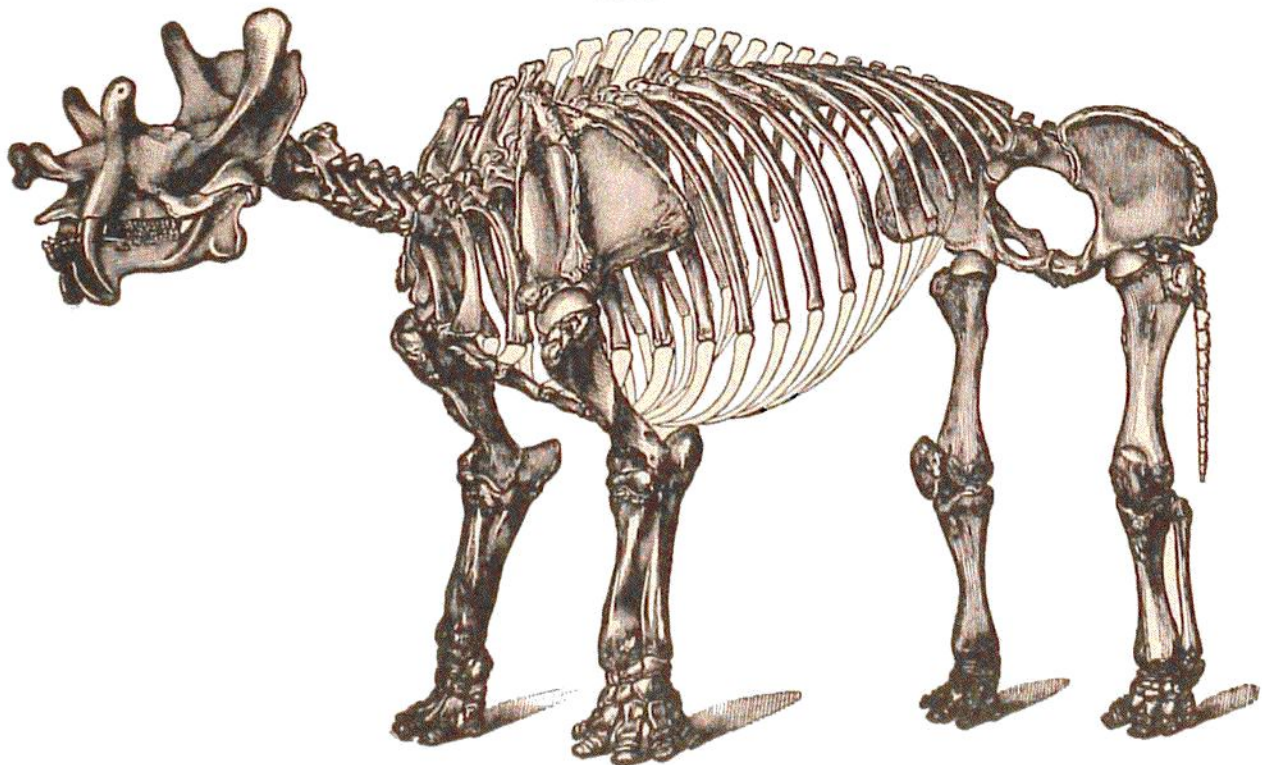
1529.



*Anaptomorphus homunculus*; *a*, cranium, from above; *b*, same, from below, enlarged. Cope.

Other Wasatch species include Creodonts of several genera, Insectivores, and the earliest of true Rodents. There were also in the Wasatch beds, and others equivalent, the first of *Artiodactyl Ungulates*, the 4-toed *Pantolestes brachystomus* of Cope, and *Homacodon priscus* of Marsh; named *Artiodactyls* (and also *Paridigitates*) because the four toes are in pairs, the third and fourth being equal, and also the second and fifth if present. Examples are shown in Fig. 1538. The two pairs are present in the Hog, Hippopotamus, etc.; the

1530.



Restoration of *Tinoceras lugens* of Marsh ( $\times \frac{1}{36}$ ).