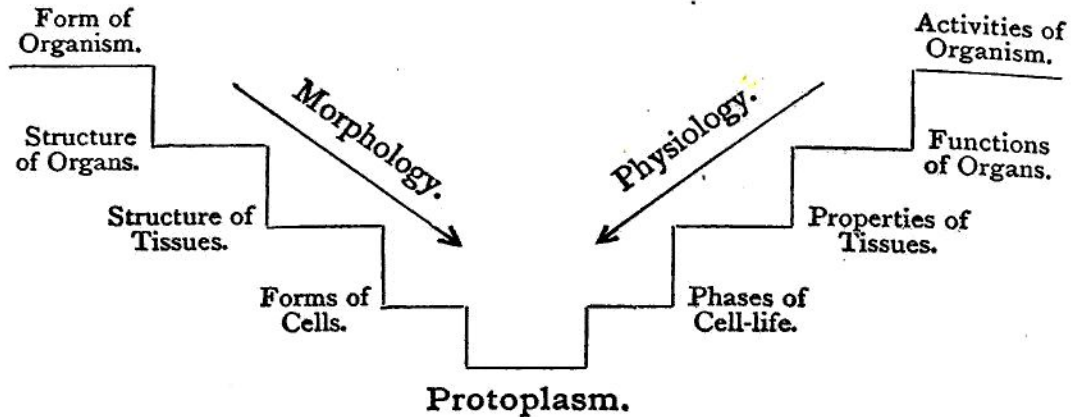


has been the parallel progress of the science of function or physiology. This may be diagrammatically expressed.



“Or we may conceive the diagram as representing a double series of five shelves, on which the literature of the different planes of research is disposed.”

MORPHOLOGY.		PHYSIOLOGY.	
Linné.	Organism	Haller.	
Cuvier.	Organ	Müller.	
Bichat.	Tissue	Bichat.	
Schwann.	Cell	Virchow.	
Dujardin.	Protoplasm	Bernard.	

It may seem to some that much of biology is ignored in this brief sketch of morphological and physiological analysis. But there are fewer omissions than there seem to be.

What of Palæontology and Embryology, what of the old-fashioned Natural History and the modern *Ætiology*? Taking the last first, it is hardly a department of biology, it is a way of looking at *all* biological facts.