

esting examples of these changes, which may be partly due to the heat of the ascending column of molten rock or

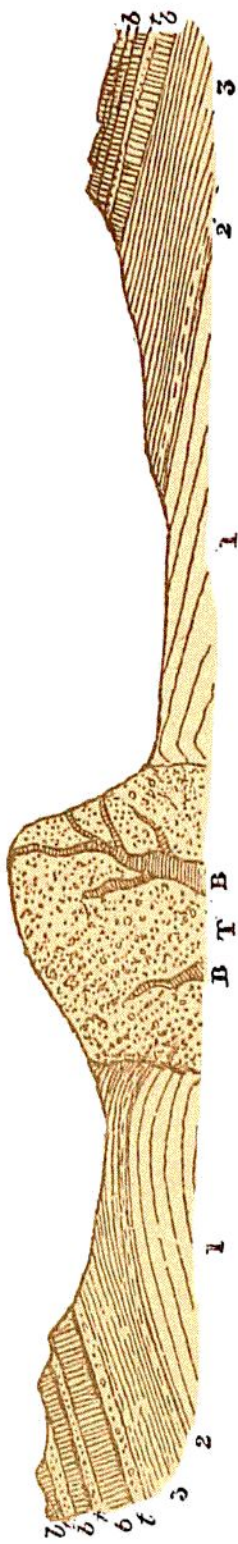


Fig. 300.—Section across the Binn of Burntisland, Fife.
 1, Sandstones; 2, Limestone; 3, Shales, etc.; *b b*, Interstratified basalts; *t t*, Bedded tufts, etc.; T, Tuff of the great neck of the Binn; B, Basalt veins.

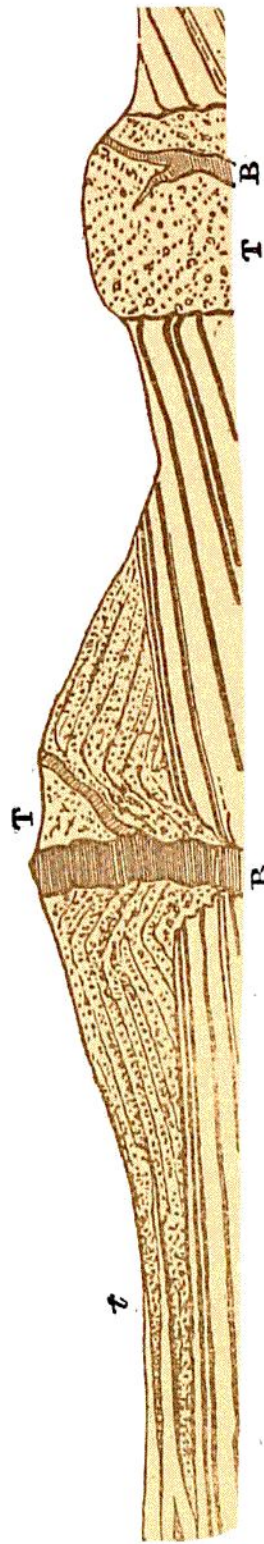


Fig. 301.—Section across the Saline Hills, Fife.
 T, Tuff of necks; *t*, Continuation of tuff of cone intercalated with the contemporaneously formed sedimentary strata; B, Basalt. The thick parallel lines are coal-seams, which have been charred round the smaller eminence (Knock Hill), while they can be worked for some way under the larger, or Saline Hill.

ejected fragments, partly to the rise of heated vapors, even for a long time subsequently to the volcanic explosions. Proofs of a metamorphism, probably due to the latter cause,