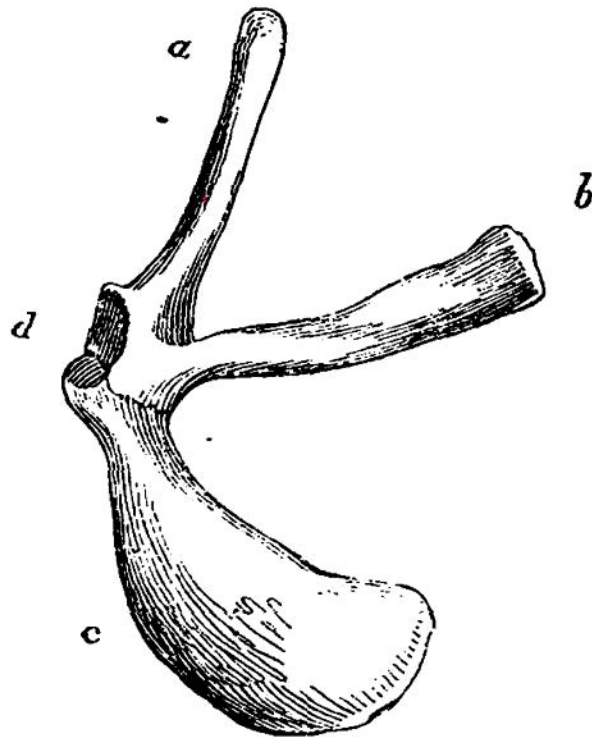


these animals are like rafters placed under the strong shell which covers them, and being united to the shell they are consequently external to the bones of the shoulder. The scapulæ and clavicles being thus within the thorax, and having nothing in their grasp, neither ribs nor spine, they must necessarily fall together, and form a circle, in order to afford fixed points to which the extremities may be attached. It would, indeed, be strange if now being joined for the purpose of giving attachment to the humerus, and in circumstances, as we may express it, so very new, they preserved any resemblance to the forms which we have been contemplating in the higher



animals. In this figure,* we have the bones of

* A. Scapula. B. Acromion process. c. Coracoid bone.
D. Glenoid cavity.