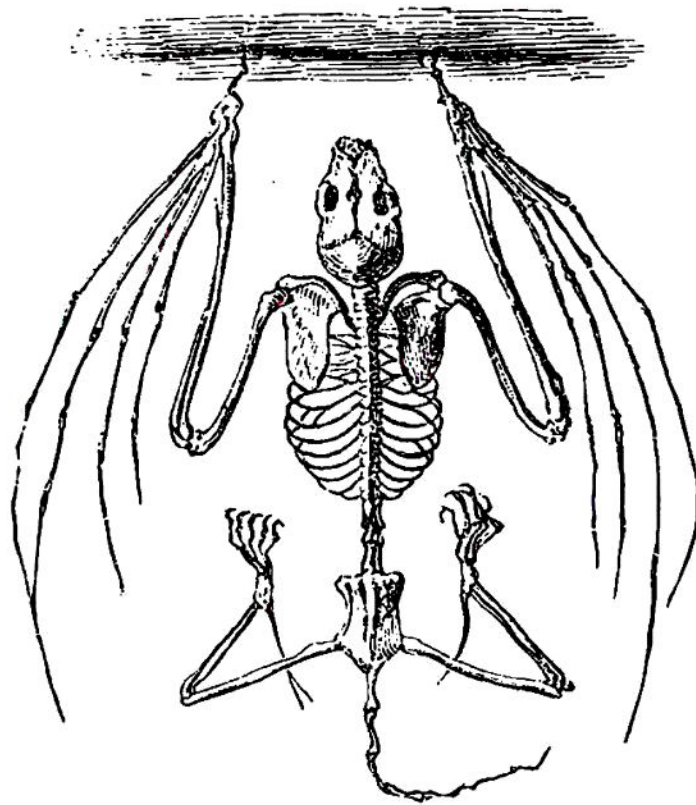


There can be no greater contrast to these bones of the mole than is presented in the skeleton of the bat. In this animal the bones are light and delicate; and whilst they are all marvellously extended, the phalanges or the rows of bones of the fingers, are elongated so as hardly to be recognised, obviously for the pur-



more strength in digging the ground. Moles have those bones also, as they plough the earth with their snouts. We have noticed the manner in which they use their strong hands; we should add that their head is like a wedge, to which their hands are assisting in burrowing and throwing aside the earth. The conformation of the head, in shape and strength of bones, and the new adjustment of a muscle, which is cutaneous in other animals (the *Platisma Myoides*) to assist in the motions of the head, are among the most curious changes of common parts to new offices. See again the "Additional Illustrations."