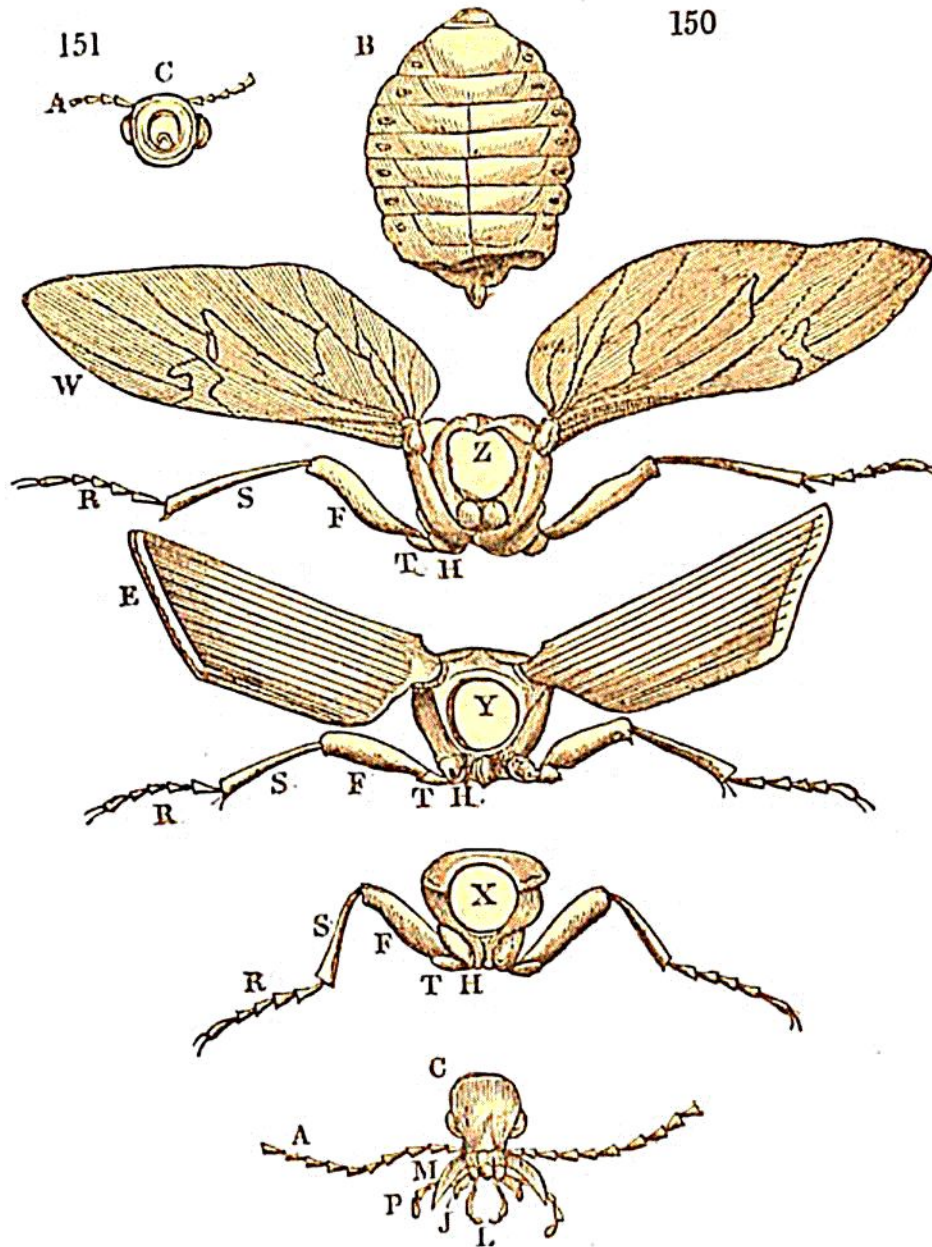


The *head* contains the brain, or principal enlargement of the nervous system, and the organs of sensation and of mastication. Its size, as compared with the rest of the body,



varies much in different insects, and is in general proportionably larger than it is in the larva state. Its integument, which, from analogy with vertebrated animals, has been called the *skull*, or *cranium*, (c, Fig. 150,) is usually the hardest part of the general crust. Although it may appear, on a superficial examination, to consist of a single undivided piece, yet, on tracing its gradual formation, it is found to be in reality composed of a union of several of the segments of the larva. Audouin and Carus distinguish three component