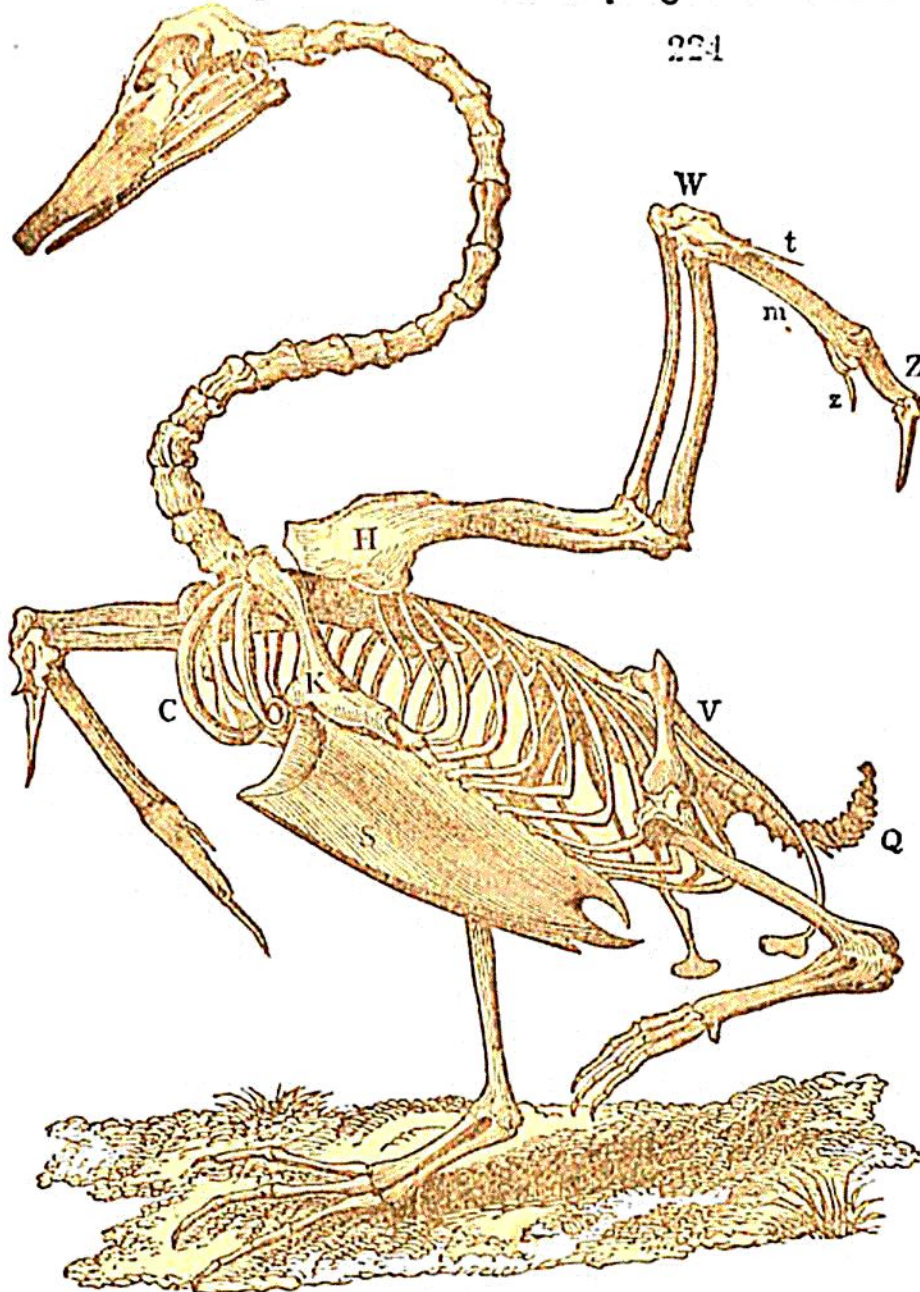


trary, the ribs, and the viscera which they protect, are placed as far back along the spinal column as possible; and a long and flexible neck extends from the trunk to the head, which is thus carried considerably forwards. These circumstances are very apparent in the skeleton of the swan, represented in Fig. 224. In a fish, progressive motion is



effected principally by the movements of the tail, which impels the body alternately from side to side: in a bird, the only instruments of motion are the wings, which are affixed to the fore part of the trunk, and are moved by muscles situated in that region. In the fish, the spine is flexible near-